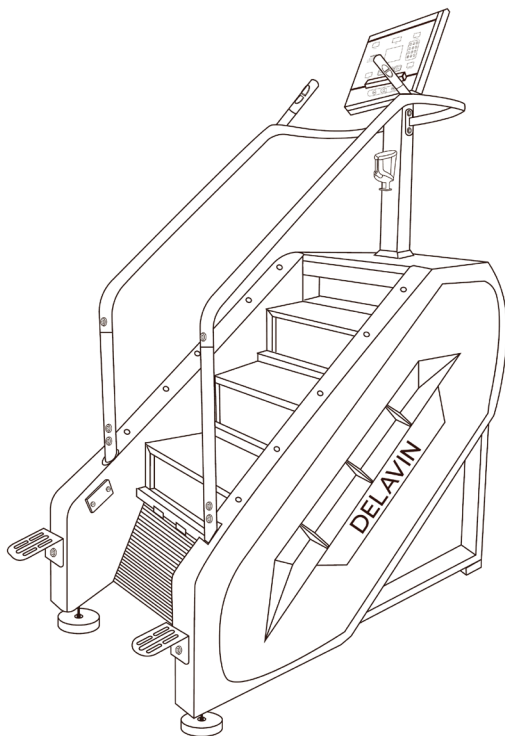


DELAVIN®

Stair Machine Instruction Manual



IMPORTANT SAFETY INSTRUCTIONS

WARNING - Read all instructions before using this stair machine. Improper assembly and use can cause safety hazards or damage to your product and your home. It is important your stair machine receives regular maintenance to prolong its useful life.

1. Use the stair machine to ensure that the four corners are placed on the ground smoothly and reliably. And the safety space of 79 x 40 inches should be reserved behind the body of the stair machine.
2. The stair machine should be placed indoors; avoid using it outdoors or in high-humidity areas. Do not splash any water or liquids on the machine.
3. Any device above the fuselage shall not be in a relaxed state. If there is any loosening, please tighten or replace them in time.
4. Do not touch any parts of the stair machine in operation with your hands.
5. If you feels any discomfort or abnormal conditions during use, please stop exercising immediately and consult a doctor.
6. During maintenance of the stair machine, there should be a clear stop sign near the machine.
7. Stair machine is strictly forbidden to be used under unstable voltage. Ensure voltage is AC110, otherwise it is necessary to install a regulator to maintain voltage in the required voltage.
8. Never allow children on or near the stair machine.
9. Keep the stair machine away from flammable and explosive materials to avoid danger from static electricity during operation.
10. The stair machine is suitable for commercial fitness clubs, clubs fitness, sports training, etc.

IMPORTANT OPERATION INSTRUCTIONS

- Be sure to read the entire manual before operating your machine.
1. When using the equipment, please wear appropriate sports clothes and sports shoes. Professional guidance must be provided for the first time.
 2. Two or more people are not allowed to exercise on the stair machine at the same time. The maximum weight of the machine is 440 LBS.
 3. Improper use or overload training may lead to damage of motor and controller, accelerated aging of transmission system, or even physical injury.
 4. When using the stair machine for the first time, hold the handrail with both hands to maintain your balance.
 5. When adjusting resistance, do so slowly, with as little adjustment as possible.

6. You can only get off the platform when it is confirmed to be safe.
7. Long hair users should pay attention to the safety of hair during use.
8. If the stair machine has abnormal sound or other abnormal conditions, please stop the operation immediately and contact our after-sales department in time to seek professional services.
9. Install photoelectric switch at the lower right corner of the stair machine step. If objects are detected to be blocked, the stair machine will stop immediately for safe use.
10. Before each use of the staircase machine, it is necessary to confirm whether the brake has held the brake. The detection method is: without clicking on the start, step on the staircase machine under the staircase machine. If the staircase does not move continuously, the brake can be used without any problem. If the staircase has continuous movement, it is strictly prohibited to use and contact our company by email. Change the brake.
11. Always hold onto the handrails when operating the display screen.
12. Consult your doctor before exercising if you have any of the following conditions:
 - a. Heart disease, hypertension, diabetes, respiratory conditions, chronic illnesses, or complications from smoking.
 - b. If you are over 35 years old and weigh more than the recommended weight.
 - c. If you are pregnant or breastfeeding.
13. Make sure to drink enough water after exercising for over 20 minutes on the stair machine.
14. If you feel dizzy, experience chest pain, or any discomfort or abnormalities while using this machine, stop exercising immediately and consult a doctor.

WARNING - We recommend consulting your doctor or a health professional before starting any exercise program. We are not responsible for any troubles or injuries resulting from non-compliance with these guidelines. This product must be installed and used by an adult. Please keep children and pets away during the installation and use of this product.



Consumer Service

If necessary, to quickly free replace damaged/missing parts. Simply have your order ID, instruction manual, and part number/description ready when you write an email to us. It's that easy.

Contact us

Monday to Sunday (Except holidays)

We will respond within 24 hours.

E-MAIL:
service@delavinhome.com

1. Technical Standards:

Input power supply voltage: AC20V

Time display range: 0:00-99:59

Height display range: 0.00-3280 ft

Heat display range: 0-999 (kcal)

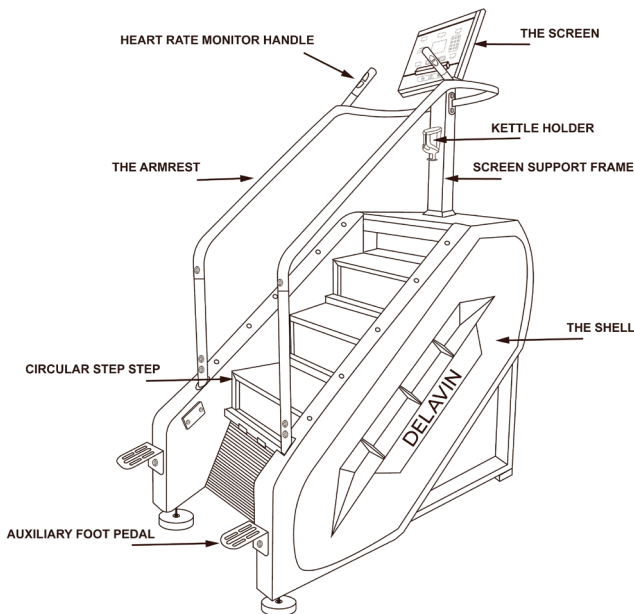
Rank display range: 0-15

Step number display range: 0-9999

Power wire display specification: 10A AC110V

Running speed: 24 - 164 steps per minute

2. Graphics of The Whole Machine



3. The Installation Process

Assembly instructions:

On the principle of easy assembly

Everything in this section refers to ensuring that staircases can be assembled very easily and correctly.

A. Because of the large size of the staircase machine, please select the assembly site where the staircase machine will be placed to ensure that there is enough space around the staircase machine.

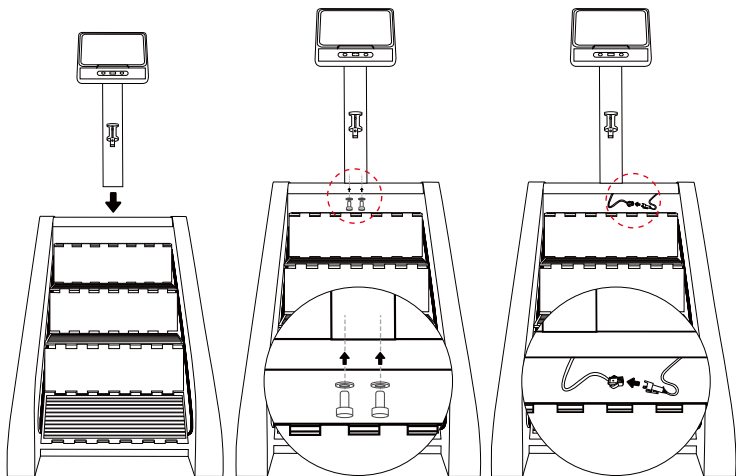
B. Place all parts of staircase machine in empty area and remove all packing materials. Do not discard packing materials before assembly is completed.

C. All bolts must be imprisoned during assembly unless otherwise specified, and all bolts must be inspected after assembly.

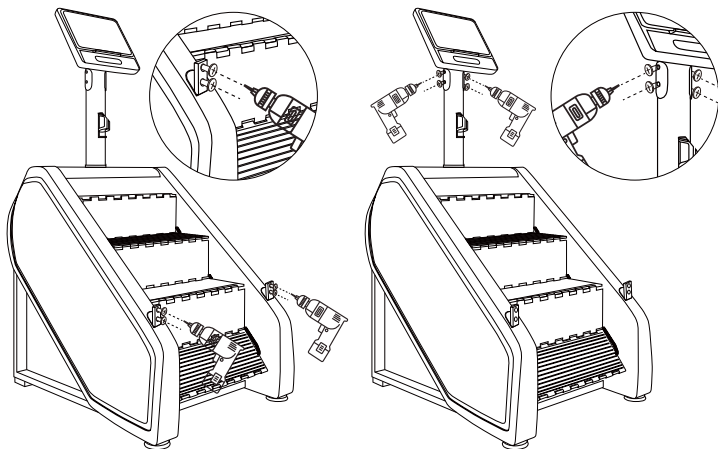
D. When assembling this staircase, make sure that all parts are assembled according to the assembly drawing.

Assembly Step:

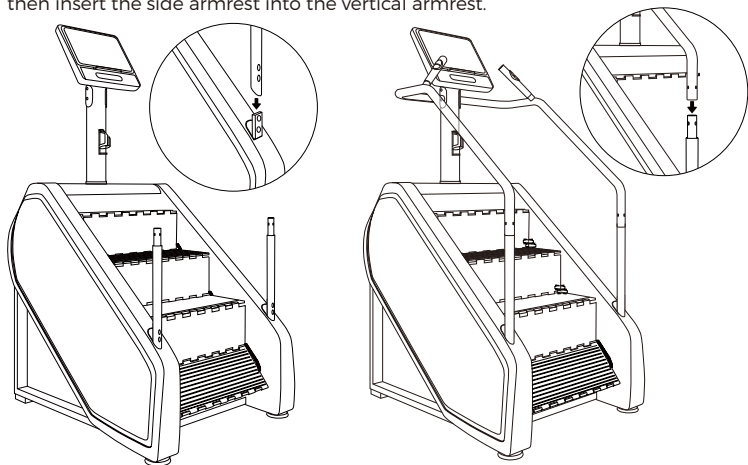
Step 1. Insert the screen support frame into the position shown in the stair machine diagram and fix it with two screws. Then connect the communication line of the screen support frame with the communication line of the main frame of the staircase machine.



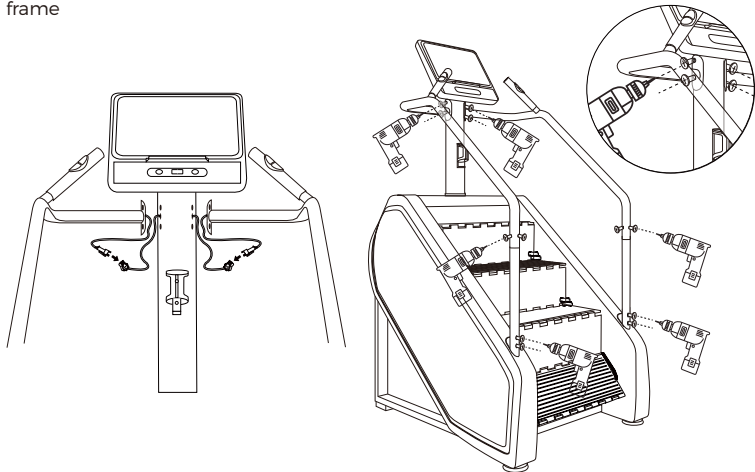
Step 2. As shown in the figure, remove the screws of the screen support frame and the columns on both sides.



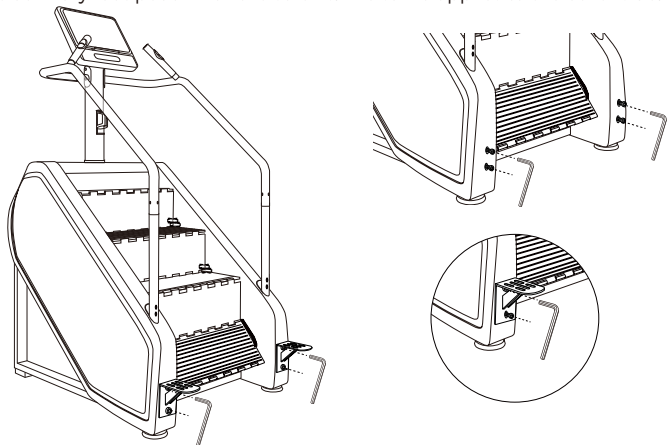
Step 3. Insert the vertical part armrest into the columns on both sides, and then insert the side armrest into the vertical armrest.



Step 4. Connect the communication line of the screen support frame with the communication line of the armrest, and fix the armrest to the screen support frame



Step 5. To install the auxiliary foot pedal, first remove the screws and then fix the auxiliary foot pedal with the screws. The same applies to the other side.



4. LED Display Instructions

The stair machine LED display adopts the principle of capacities press, the user only needs to press and press gently when using, the effect can be comparable to that of the mobile phone screen. The surface of the panel is durable and colorful, the appearance of acrylic material to ensure long time use, will not appear wear off paint, color, water leakage and other problems.



- ① PULSE: Displays Heart Rate
- ② TIME: 0:00-99:59
- ③ CALORIES: 0-999 (kcal)
- ④ Display Mode and Level
- ⑤ Level Selection Button: Press a Number and Then OK to Select
- ⑥ STEP: Step Count(0-9999)
- ⑦ PROG: Program Button Select P1-P8 Program
- ⑧ RESET: Press This Button to Reset Data
- ⑨ MODE: Mode Button Set time
- ⑩ RESISTENCE: Displays Level
- ⑪ OFF
- ⑫ ON

“+”&“-”: Adjust Level / Time

5. Machine Commissioning Process

- (1) Turn on the power supply, electrify the machine, step on the staircase machine, press all the keys on the electronic watch, and observe whether each key corresponds to the functions it represents, whether the keys are effective and whether the handle is good.
- (2) Holding down the start button machine running stairs, run level check to see if the stairs machine parts working properly at this time
- (3) Manual touch In standby mode, press "START/STOP" directly, and the stair machine will run at the speed of level 1. For other Windows counting forward from 0, click "+" and "-" to change the running level. The Delete key is the undo key, and OK is the confirm key.
- (4) The photoelectric switch indicates that the photoelectric switch is placed in the lower right corner of the step, and the stair machine will stop immediately if the object is detected, which will be used to ensure that there is no problem with the photoelectric light opening when it is used to ensure the use of the photoelectric switch.

6. Daily Maintenance

(1) Clean every day

It is suggested to clean the equipment before and after each training session to remove dust. Use a soft cloth with a mild cleaner to wipe all exposed surfaces. Be sure to read and follow the manufacturer's instructions before using any detergent, especially regarding dilution. Avoid using a concentrated solution or any acid cleaner that may erode the protective coating of the equipment. Regularly use a vacuum cleaner to clean the floor beneath the equipment to prevent dust accumulation, which could affect the equipment's operation. Use a soft nylon brush to clean the grooves and foot pedals of the equipment.

(2) Check every day

Check the equipment at least once a day for the following problems. Slipping belt, loose fasteners, abnormal noise, any other signs that equipment may need to be repaired.

(3) Weekly maintenance

Perform the following weekly maintenance tasks.

Use gray or licensed cleaners to clean tracks and wheels, and use a vacuum cleaner or wet mop to clean floors under equipment. All functions of the

detection console include heart rate monitoring function and whether the color detection equipment is stable on the floor. All feet of the fixed equipment should be fixed in contact with the floor equipment and should not be shaken or shaken when used. If not, flatten it again.

(4)Moving equipment is very heavy

If you plan to move the equipment to a new location, ask for adult help and use the correct lifting techniques. If the equipment has rollers at one end, the department USES rollers to reduce the burden on you and your assistants. It is recommended to use four-wheel transport trolley to move.

(5)Storage when not in use for a long time

If you do not want anyone to use the appliance for a long time, perform the following tasks to save it.

Place equipment properly to avoid damage and not interfere with other people or other equipment.